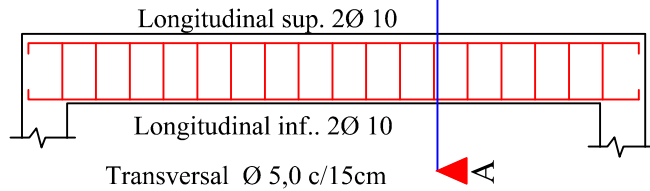
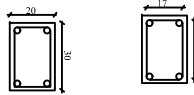


Vigas 11,12,13,14,15;  
e 21,22,23,24,25 e 26

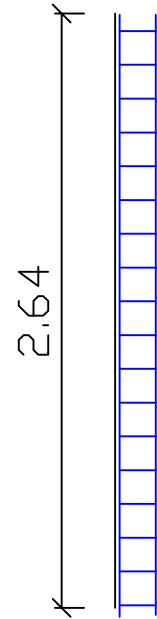


Corte AA

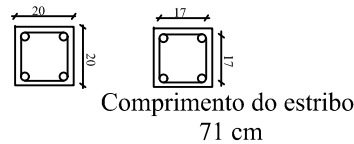


Comprimento do estribo  
91 cm

Pilares 11,12,13,14,15 e 16

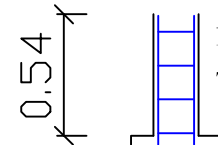


Longitudinal 4Ø 10  
Transversal Ø 5,0 c/15cm

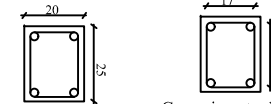


Comprimento do estribo  
71 cm

Pilares 1,2,3,4,5 e 6

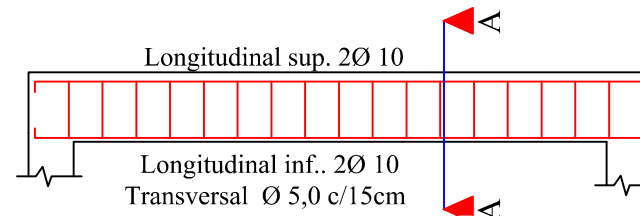


Longitudinal 4Ø 10  
Transversal Ø 5,0 c/15cm

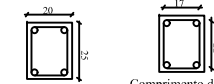


Comprimento do estribo  
81 cm

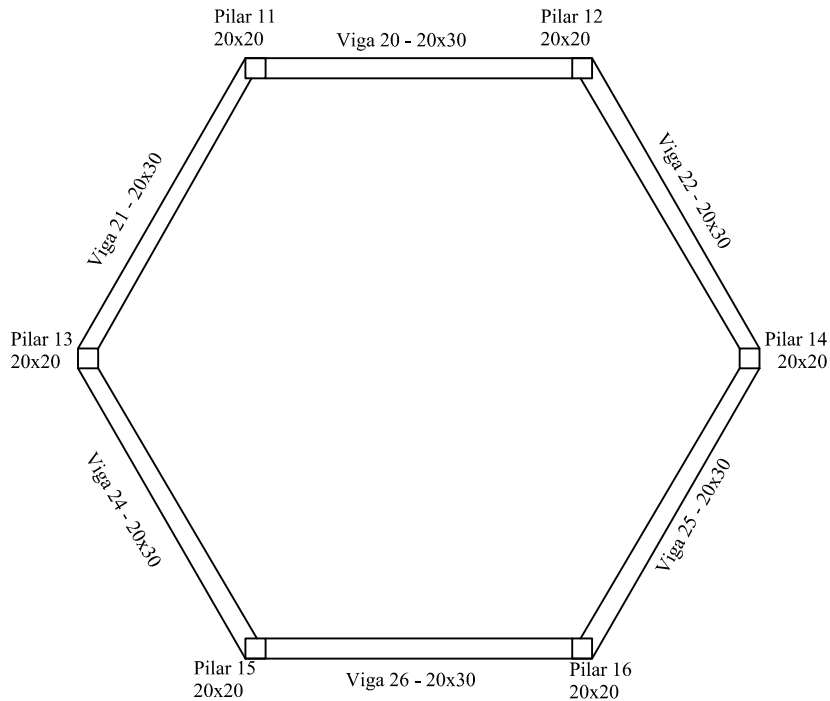
Vigas 1,2,3,4,5 e 6



Corte AA



Comprimento do estribo  
81 cm



Planta Baixa Estrutural - Pilares e Vigas do Nível 3,49m

PREFEITURA MUNICIPAL DE CERRO BRANCO

OBRA:

Projeto do Coreto do Município de Cerro Branco

PROJETO:

Estrutural

PROPRIETÁRIO:

Prefeitura Municipal de Cerro Branco

LOCAL

Avenida 12 de Maio, Cerro Branco

DATA:

08/19

ESCALA:

1/75

RESP. TÉCNICO:  
PROJETO

Eng. Civil Mateus da Costa - Crea RS 200556

ÁREA:

31,17m<sup>2</sup>

PRANCHA:

02