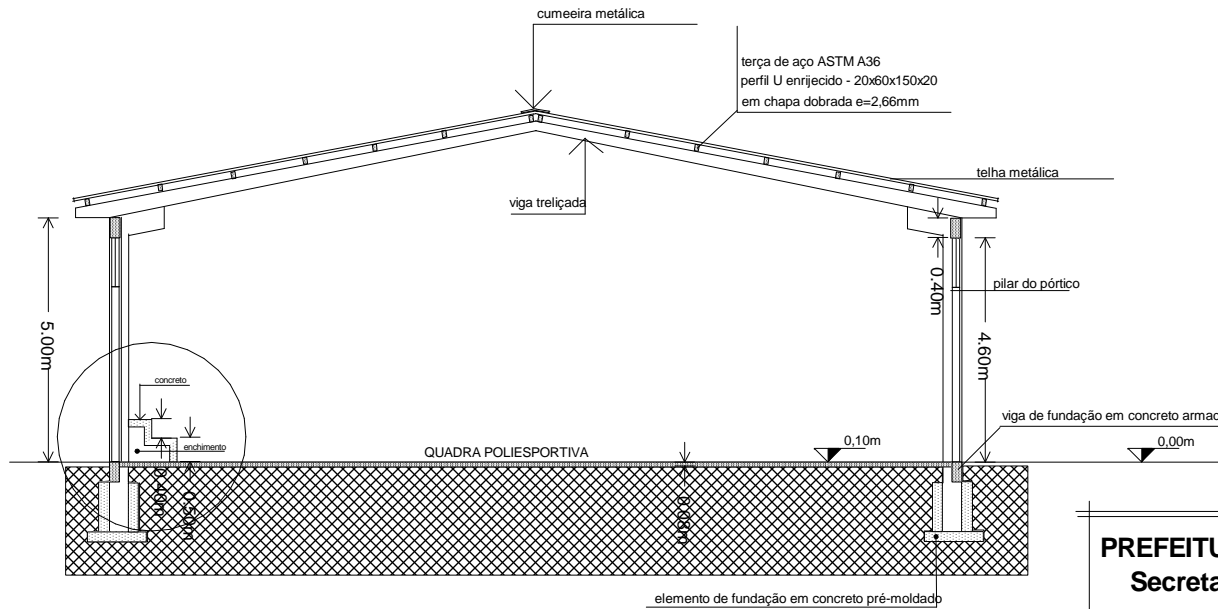
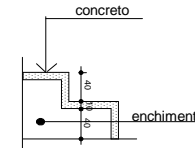
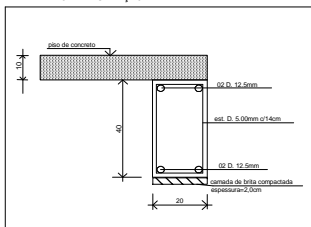


# FACHADA

## detalhe arquivancada



DETALHE VIGA DE FUNDAÇÃO



**PREFEITURA MUNICIPAL DE CERRO BRANCO**  
**Secretaria Municipal de Obras**

**Pavilhão Poliesportivo Serraria Scheidt**

Prefeito Municipal

BRUNO RADTKE

Responsável Técnico

eng civil Alfredo Schiefelbein

A=736,18M2

AGOSTO/10

**ARQUITETÔNICO - CORTE/FACHADA**